

SIZE
100 MW

PROJECT STATUS
In Development

TIMELINE
TBD

SERVICES PROVIDED

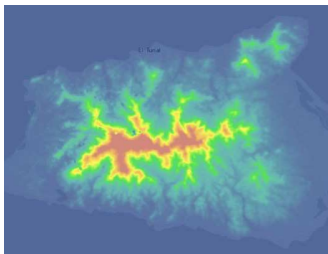
- Meteorological tower installations and monitoring
- Site-suitability analysis
- Wind resources and energy assessment
- WindPRO training



CITIZENS WIND - ISLA DE MARGARITA, VENEZUELA WIND ENERGY ISLA DE MARGARITA, VENEZUELA

CLIENT CONTACT

Citizens Wind, Braden Houston
Director of Project Development
Citizen's Energy Corp.



PROJECT DESCRIPTION

Citizens Wind, an energy development firm, engaged EAPC Wind Energy to assess a potential wind farm site on Margarita Island and to install four meteorological masts. EAPC prepared a wind model of the site using WindPRO and provided four recommended meteorological mast locations for data monitoring leading to an optimal wind resource assessment.

In December of 2011, EAPC installed four 60 m tall meteorological masts on four different locations on the site spanning 20 kilometers. The data from each mast is transmitted via satellite modems and is being monitored by EAPC to further develop wind reporting for the client. The data will further be validated, correlated, sheared, and incorporated into the WindPRO model. EAPC will create a wind resource map to optimize the turbine layout across the site. EAPC is also under contract to train and support a local organization in the use of WindPRO Modeling Software.

KEY ACHIEVEMENTS

EAPC Wind Energy successfully installed four 60 m meteorological masts on-site in extremely challenging mountainous and desert terrain. EAPC coordinated all needed construction materials and equipment to be shipped, received, and stored internationally under secure conditions. EAPC coordinated and trained local construction workers on meteorological tower installation and maintenance and worked with local contractors for equipment coordination and proper safety protocol.

